

# FRATEMA Upholstery Colour Options

## 2801 SKINFLEX ICE

**Composizione:**

Fibra: PES  
Supporto: T.N.T.

## AT 62/51 COLORADO BEIGE

Finta pelle PVC plastificato

**Composizione:**

87,5% PVC 12,5% Cotone

## 09 SKINFLEX BROWN

Finta pelle in poliuretano traspirante

**Composizione:**

80% Co. 20% PU

## AT 62/57 COLORADO BROWN

Finta pelle PVC plastificato

**Composizione:**

87,5% PVC 12,5% Cotone

## 08 SKINFLEX RED

Finta pelle in poliuretano traspirante

**Composizione:**

80% Co. 20% PU

## 06 SKINFLEX YELLOW

Finta pelle in poliuretano traspirante

**Composizione:**

80% Co. 20% PU

## AT 62/63 COLORADO GREEN

Finta pelle PVC plastificato

**Composizione:**

87,5% PVC 12,5% Cotone

## 28 SKINFLEX GREEN

Finta pelle in poliuretano traspirante

**Composizione:**

80% Co. 20% PU

## AT 62/64 COLORADO OCEANO

Finta pelle PVC plastificato

**Composizione:**

87,5% PVC 12,5% Cotone

## 29 SKINFLEX BLUE

Finta pelle in poliuretano traspirante

**Composizione:**

80% Co. 20% PU

## 31 SKINFLEX GREY

Finta pelle in poliuretano traspirante

**Composizione:**

80% Co. 20% PU

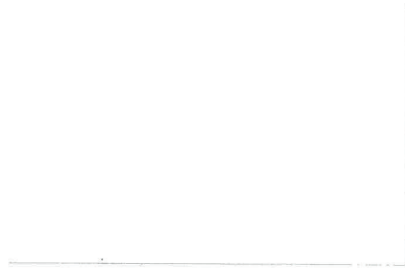
## 02 SKINFLEX LEATHERLIKE SPORTY

**Composizione:**

Fibra: PES  
Supporto: T.N.T.



# FRATEMA Unit RAL Colour Options



01 - RAL 9003 - WHITE



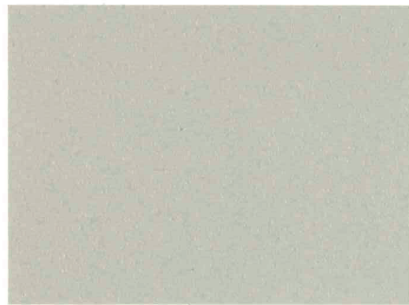
02 - RAL 9002 - WHITE GREY



03 - RAL 9001 - WHITE CREAM



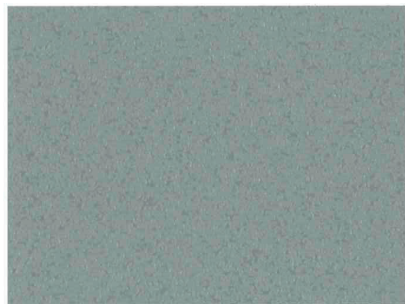
04 - RAL 1015 - LIGHT IVORY



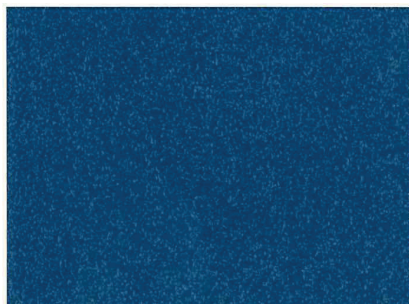
05 - RAL 7044 - HONEY GREY



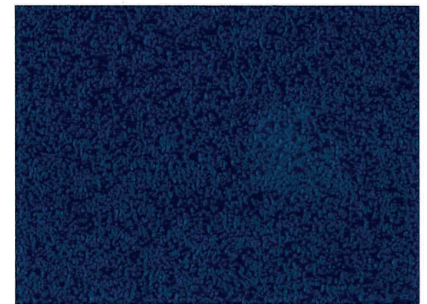
06 - RAL 7030 - GREY STONE



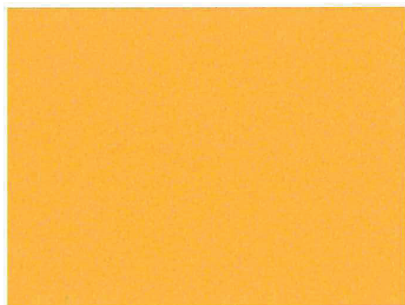
07 - RAL 7042 - ZEISS



08 - RAL 5000 - BLUE



09 - RAL 5003 - BLUE "GAMMA"



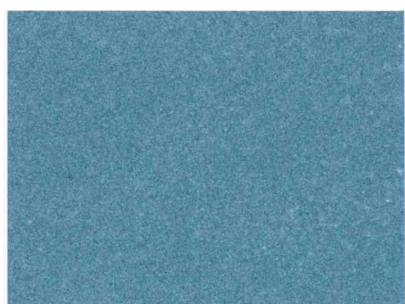
10 - RAL 1017 - YELLOW



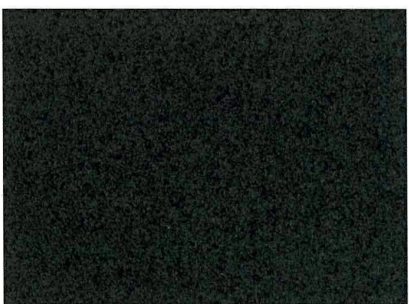
11 - RAL 6033 - GREEN MINT



12 - RAL 3004 - RED



13 - BLUE ( METALLIZED )



14 - RAL 8019 - BROWN



15 - GREEN ( METALLIZED )